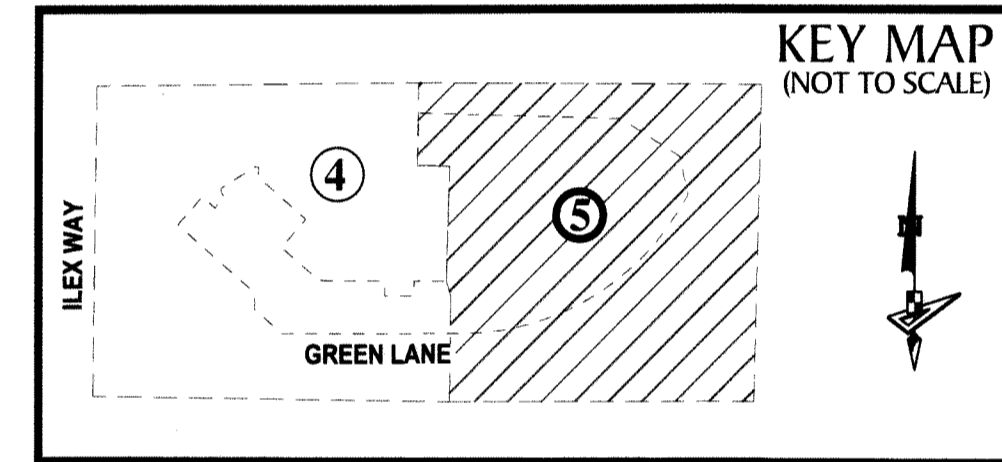
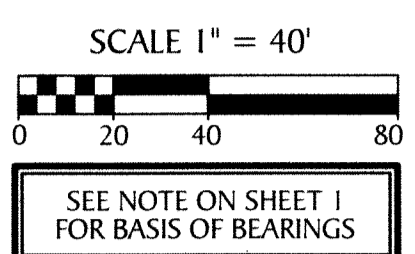
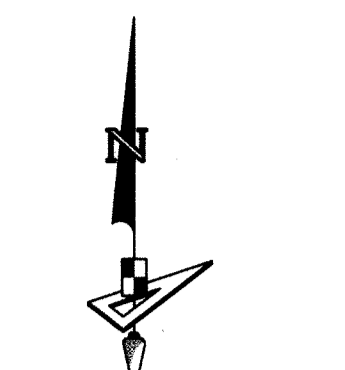


SKY COVE SOUTH - PHASE 1 B

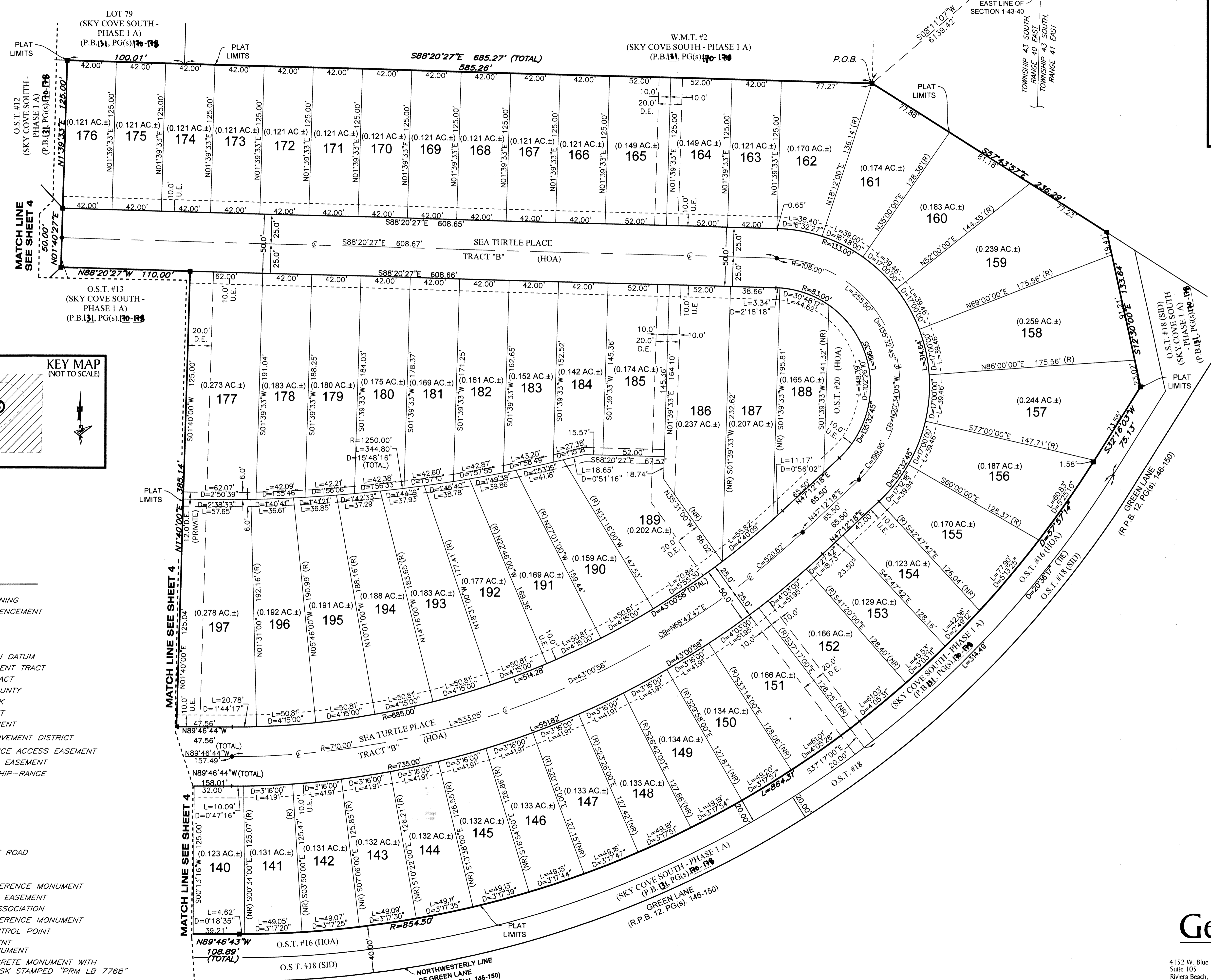
A SUBDIVISION IN SECTION 12, TOWNSHIP 43 SOUTH, RANGE 40 EAST, CITY OF WESTLAKE, PALM BEACH COUNTY, FLORIDA, BEING A REPLAT OF TRACT "N", SKY COVE SOUTH - PHASE 1 A, PLAT BOOK 131, PAGES 170 THROUGH 178, INCLUSIVE, PUBLIC RECORDS OF PALM BEACH COUNTY, FLORIDA

P.O.C. - NORTHEAST CORNER OF SECTION 1, TOWNSHIP 43 S., RANGE 40 E.

133



- LEGEND**
- P.O.B. ----- POINT OF BEGINNING
 - P.O.C. ----- POINT OF COMMENCEMENT
 - P.B. ----- PLAT BOOK
 - D.B. ----- DEED BOOK
 - PG./PG(s) ----- PAGE(S)
 - NAD ----- NORTH AMERICAN DATUM
 - W.M.T. ----- WATER MANAGEMENT TRACT
 - O.S.T. ----- OPEN SPACE TRACT
 - P.B.C. ----- PALM BEACH COUNTY
 - R.P.B. ----- ROAD PLAT BOOK
 - U.E. ----- UTILITY EASEMENT
 - D.E. ----- DRAINAGE EASEMENT
 - S.I.D. ----- SEMINOLE IMPROVEMENT DISTRICT
 - L.M.A.E. ----- LAKE MAINTENANCE ACCESS EASEMENT
 - R.P.E. ----- RURAL PARKWAY EASEMENT
 - 7-43-41 ----- SECTION-TOWNSHIP-RANGE
 - R ----- RADIUS
 - L ----- ARC LENGTH
 - D ----- DELTA ANGLE
 - CB ----- CHORD BEARING
 - C ----- CHORD
 - R/W ----- RIGHT-OF-WAY
 - CL ----- CENTER LINE OF ROAD
 - (R) ----- RADIAL
 - (NR) ----- NON-RADIAL
 - PRM ----- PERMANENT REFERENCE MONUMENT
 - R.P.E. ----- RURAL PARKWAY EASEMENT
 - HOA ----- HOMEOWNERS ASSOCIATION
 - PRM ----- PERMANENT REFERENCE MONUMENT
 - ----- PERMANENT CONTROL POINT
 - ----- FOUND PERMANENT REFERENCE MONUMENT
 - ----- SET 4"x4" CONCRETE MONUMENT WITH 2" ALUMINUM DISK STAMPED "PRM LB 7768"



GeoPoint
Surveying, Inc.

4152 W. Blue Heron Blvd.
Suite 105
Riviera Beach, FL 33404

Phone: (561) 444-2720
www.geopointsurvey.com
Licensed Business Number LB 7768

Sheet No. 5 of 5 Sheets